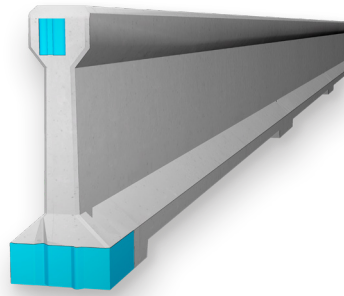


REBLOC 80SAH_12

**Precast Concrete
Vehicle Restraint System**

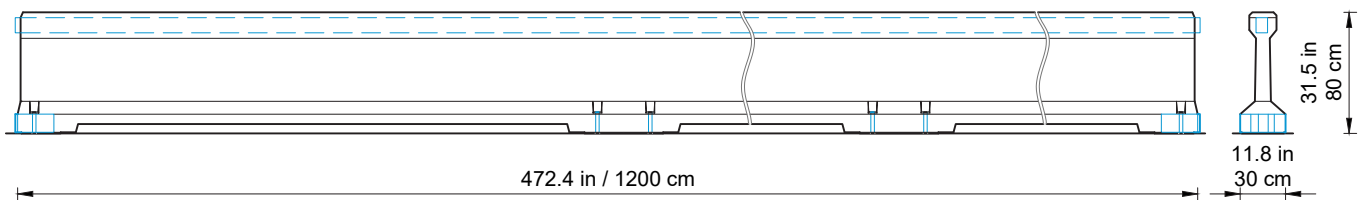
**Temporary System
Free standing**



REBLOC 80SAH-12

Technical data

Test level	TL3	TL4
Working width	61.4 in (1.6 m)	127.2 in (3.2 m)
Dynamic deflection	51.6 in (1.3 m)	66.9 in (1.7 m)
Installation	free standing on asphalt concrete	
Application	single-sided double-sided	
Minimum installation length	354 ft (108 m; 9 elements)	512 ft (156 m; 13 elements)
Initial/end anchorage	required (4 screwbolts Ø 20/300 mm) or force closure	
Dimensions L x W x H	472.4 x 11.8 x 31.5 in (1200 x 30 x 80 cm)	
Weight/element	approx. 7209 lb (3270 kg)	
Curve radius	$r \geq 853$ ft (260 m)	
Coupling/exposed steel parts	fully integrated, exposed parts hot-dip galvanized	
Miscellaneous	elastomer pads in contact areas for protection of the road surface	



all dimensions in cm